



Marine Crescent, Ilford, IG6

BUTLER & STAG



Positioned only seconds walk from Hainault central line station is this stunning first floor two bedroom/ two bathroom apartment.



Leasehold

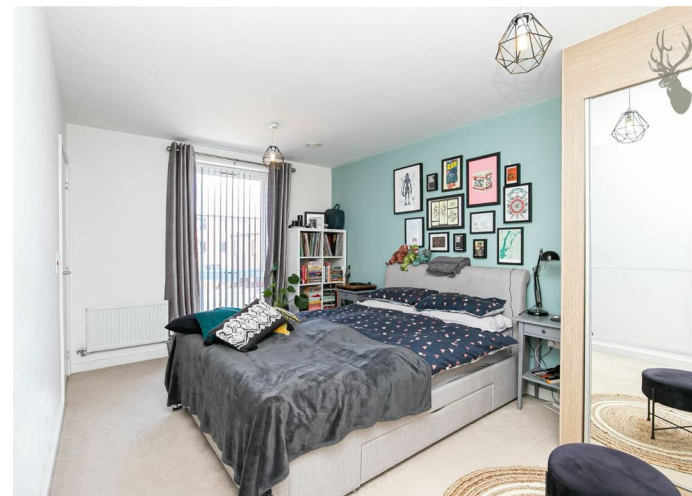
- First Floor Two Bedroom/Two Bathroom Apartment
- Open Plan Living/ Kitchen/ Dining Area
- Seconds Walk To Hainault Central Line Station
- Finished To Exacting Standards Throughout
- Private Balcony
- Chain Free

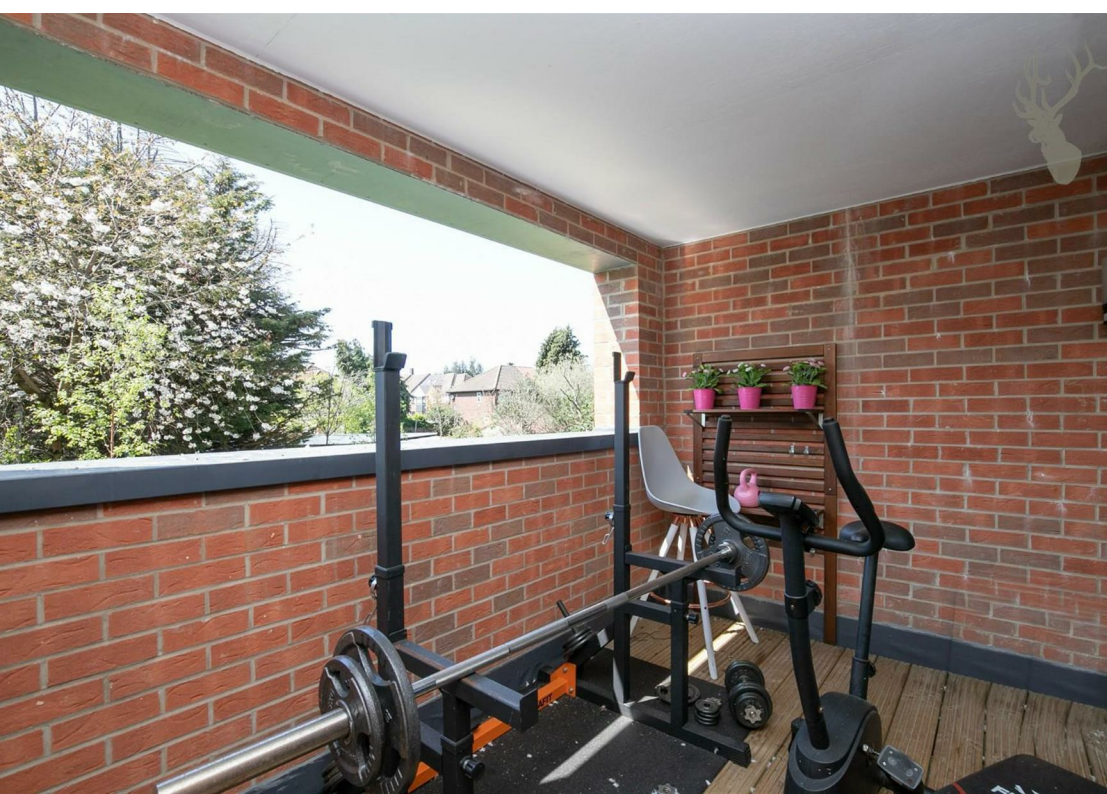
This ideal first time purchase boasts a wealth of features to include an entrance hall, two great sized double bedrooms with en-suite to master, a modern three piece bathroom suite, plenty of storage , and an open plan living space with a modern fitted kitchen aligned with integrated appliances into the spacious lounge which leads directly out onto the private balcony overlooking the communal gardens.

Externally, the communal gardens offer all residents an opportunity to use the outside space, whilst there's also a communal roof terrace.

Marine Crescent is located on a quiet turning with easy access to Hainault central line Station which offers a direct route into Liverpool Street within 31 minutes and only 41 minutes into Oxford Circus, as well as being situated just seconds walk form several bus routes to Barkingside, Ilford and Romford. There are also convenience stores a plenty within reach of a two minutes positioned on New North Road, the property is also well located for access to Hainault forest country park which offers picturesque scenery across into London alongside the catchment area for local schools too such as Fairlop Primary and The Forest Academy.

Offered Chain Free.

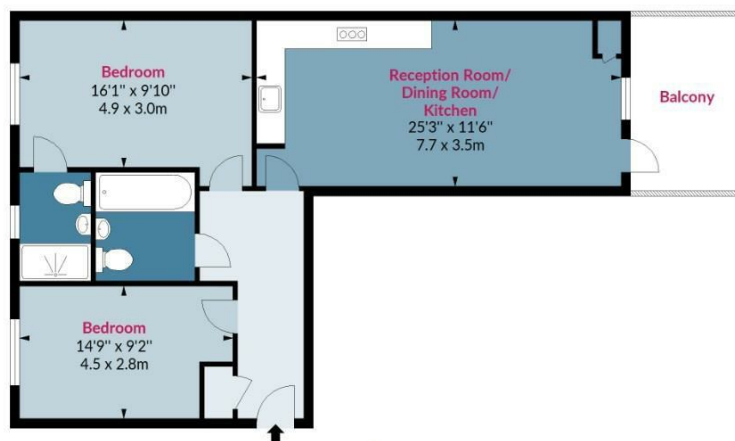




Echo House, IG6

Approx. Gross Internal Area 795 Sq Ft - 73.86 Sq M

BUTLER & STAG



First Floor

Floor Area 795 Sq Ft - 73.86 Sq M



Measured according to RICS IPMS2. Floor plan is for illustrative purposes only and is not to scale. Every attempt has been made to ensure the accuracy of the floor plan shown, however all measurements, fixtures, fittings and data shown are an approximate interpretation for illustrative purposes only. 1 sq m = 10.76 sq feet.

Date: 21/4/2023

lpaplus.com

BUTLER & STAG

☎ 01992 667666

🏠 4 Forest Drive, Theydon Bois, Essex, CM16 7EY

✉ theydon@butlerandstag.com

www.butlerandstag.uk

IMPORTANT NOTICE - These particulars have been prepared in good faith and they are not intended to constitute part of an offer or contract. We have not performed a structural survey on this property and the services, appliances and specific fittings have not been tested. All photographs, measurements, floor plans and distances referred to are given as a guide and should not be relied upon.